

**NATIONAL HOSPITAL, ABUJA  
YEAR 2010 ANNUAL STATISTICS/  
PERFORMANCE REPORT**

## **INTRODUCTION**

The year 2010 Annual Statistics/Performance Report reflects the general activities of the Hospital in the pursuit of ensuring good service delivery to its numerous clients and stakeholders in the course of the year.

The report is presented in sections Viz:

### **SECTION 1:**

- i. General Statistical review for the Year 2010

### **SECTION II.**

- i. 2010 Performance Report

### **SECTION III.**

- i. General Comments
- ii. Recommendations

### **SECTION IV.**

- i. Appendices

## **EXECUTIVE SUMMARY**

The major highlights of the activities of the hospital for the 2010 operational year are represented in this summary.

1. Total Patients attendance for 2010 was **134,972** made up of **127,192** out-patients and **7,780** in-patients attendance
2. New patients attendance for the year amounted to **28,927** cases.
3. Total discharges came to **6,585** cases.
4. Total death recorded for the year came to **523**.
5. Total deliveries for 2010 came to **1,716** births.
6. Total surgical operations conducted in the Hospital amounted to **2,580** case with general surgery being the highest with **635** cases.
7. Total waivers/exemptions granted to poor/indigent patients amounted to **₦14,850,418.00 for the year**.
8. Against key health performance indicators the hospital was found to be:
  - i. Accessible
  - ii. Equitable
  - iii. Effective in patient care intervention
  - iv. Efficient in the utilization of resources

The waivers/exemption granted to indigent/poor patient regime is unsustainable in the future.

9. See general Comments/Recommendation

## SECTION I.I

### GENERAL STATISTICAL REVIEW FOR THE YEAR 2010

Total hospital attendance for Year 2010 was **134,972** made up of **127,192** out-patients and **7,780** in-patients (Ward admissions). For the same period last year, total attendance was **152,215** representing **11.3%** fall from the 2009 levels.

A review of out-patients attendance on month by month basis reveals that March, 2010 recorded the highest attendance of **12,909** cases followed by November and October with **11,630** and **11,520** patients attendance respectively. Least attendance was recorded for the month of July with **5,055** attendance for out-patients. This was due to the health workers strike that took place that month.

Attendance by specialties shows that General out-patients clinic recorded the highest attendance of **21,830** as against **22,541** for same period last year representing a **3.2%** decline for the period. This was followed by STC and Paediatric out-patient clinics with **14,102** and **9,201** attendance respectively. Accident/emergency and the ante-natal clinics recorded **12,469** and **11,932** respectively. IVF recorded the least attendance of 333 for the period.

Total Surgical operations performed for the period were **2,580** cases with general surgery being the highest with **635** cases followed by obstetrics c/s with **705** cases.

Cardiothoracic recorded the least surgical cases with only **27** cases recorded for the period as against 2 cases recorded for 2009.

The Hospital recorded a total of **27,923** Radio-diagnostic cases against **27,791** cases recorded for same period last year representing an increase of **0.5%**.

Total deliveries for the year were **1,716** cases as against **1,910** cases recorded year 2009. Further, birth cases by types had a total of **914** SVD births, C/S cases of **744** and **58** still birth cases.

Total ward deaths recorded for the period was **523** cases with ICU being the highest with **112** cases followed by SCBU with **76** cases for the period. When compared with last year, figure of **512** death cases, there was a **2.2%** increase in death cases for the period.

Haemodialysis Unit recorded **564** attendance with hospital conducting **2,466** session for the year as against **1,039** attendance with **2,688** session for 2009.

Road traffic accident cases recorded for the period came to **441** cases made up of **325** males and **116** females with the month of December recording the highest with **102** cases.

Total retainers' attendance for the year came to **5,868** made up of **1,030** new patients and **4,838** review cases.

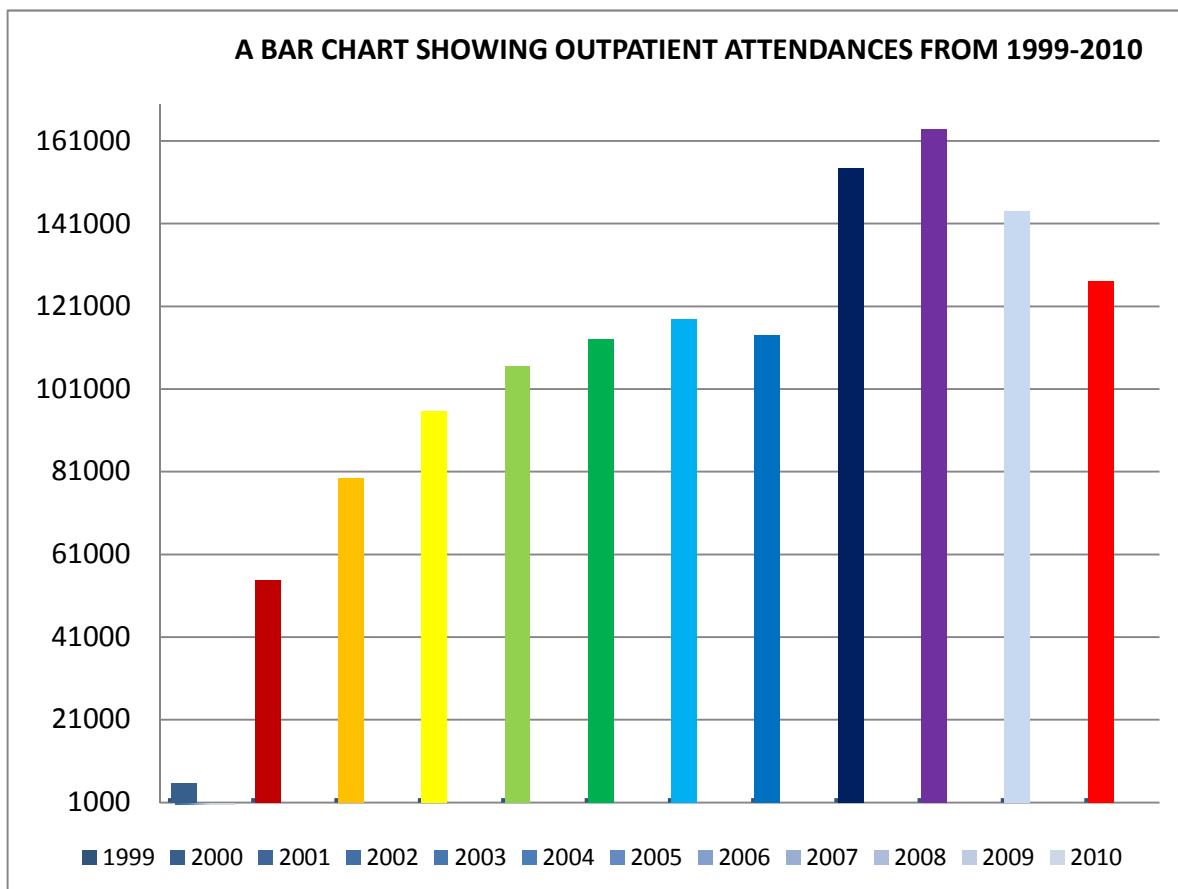
**For further details see attached appendices:**

## SECTION 1.2: YEAR 2010 IN PERSPECTIVE

This section seeks to bring year 2010 into perspective, looking backward to the Hospital performance from inception till date (1999-2010).

### 1.2.1 OUT-PATIENTS ATTENDANCE

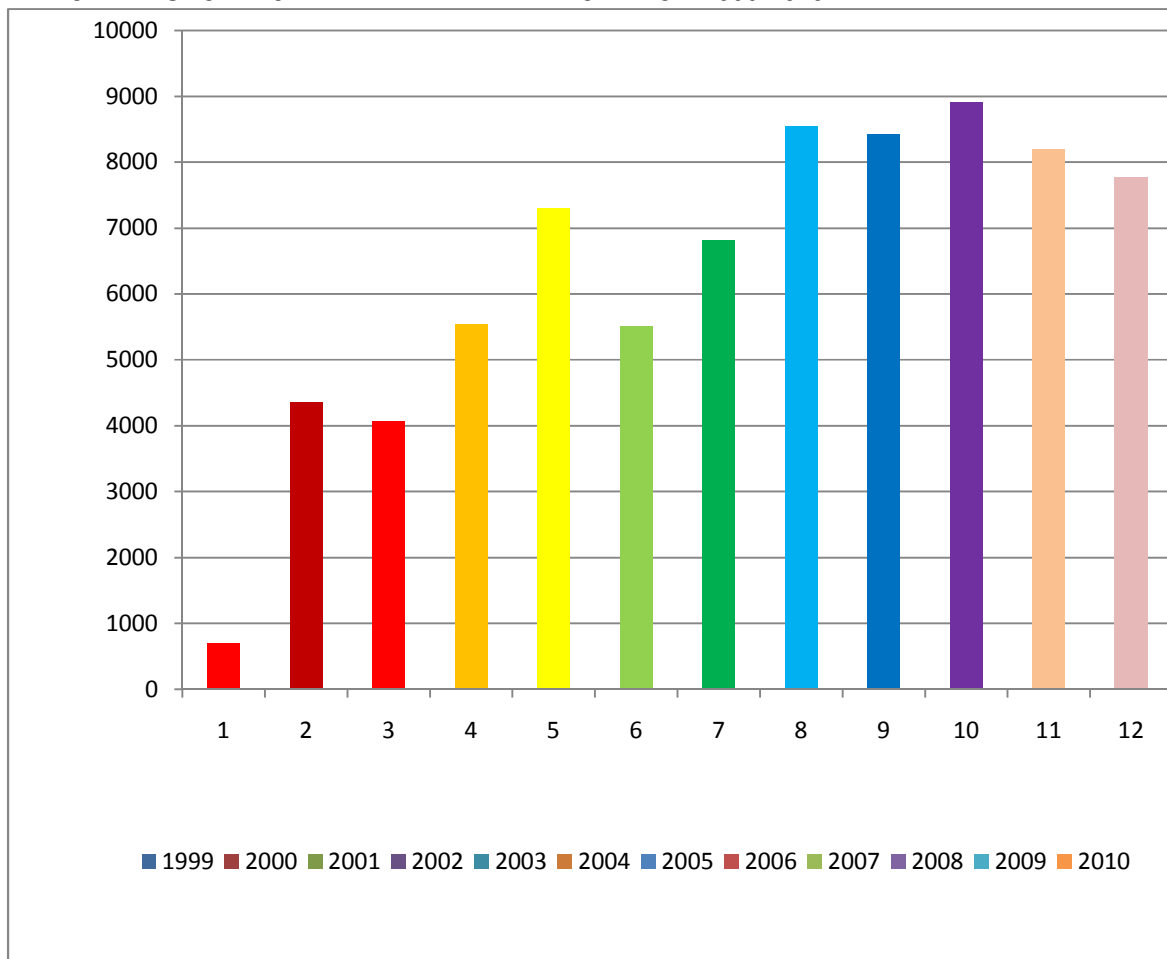
<u>YEAR</u>	<u>ATTENDANCE</u>
1999	5631
2000	54,770
2001	79,409
2002	95,725
2003	106,597
2004	113,062
2005	117,921
2006	114,226
2007	154,482
2008	163,985
2009	144,016
2010	127,192



## 1.2.2 IN-PATIENT ATTENDANCE

<u>YEAR</u>	<u>ATTENDANCE</u>
1999	696
2000	4,360
2001	4,071
2002	5,534
2003	7,297
2004	5,514
2005	6,823
2006	8,549
2007	8,429
2008	8,908
2009	8,199
2010	7,780

BAR CHART SHOWING INPATIENT ATTENDANCE FROM 1999-2010



## **2.0 SECTION II: 2010 PERFORMANCE REPORT**

This section evaluates the Hospital's performance using standard healthcare performance indicators to assess the activities of the hospital over the period.

**These indicators include:**

- i. **Accessibility indicator** which measures the degree of accessibility of the hospital healthcare delivery service to the public.
- ii. **Effectiveness indicator** measures the degree of effectiveness of the hospital intervention in the health process.
- iii. **Efficiency Indicator** measures the hospital ability to utilise available resources, (both human and materials) to deliver services.

**This Performance Report looks backwards to the five year period (2005-2010).**

### **2.1.0 PERFORMANCE INDICATOR-ACCESSIBILITY OF SERVICE**

**Accessibility refers to the presence or absence of physical or economic barriers that people encounter in using the Hospital. It defines the capability of National Hospital to provide affordable and timely care according to patients needs.**

**Three measures that elicit this indicator for accessibility are:**

#### **2.1.1 ACCESSIBILITY INDICATOR: No. of In-patient consultations for the period.**

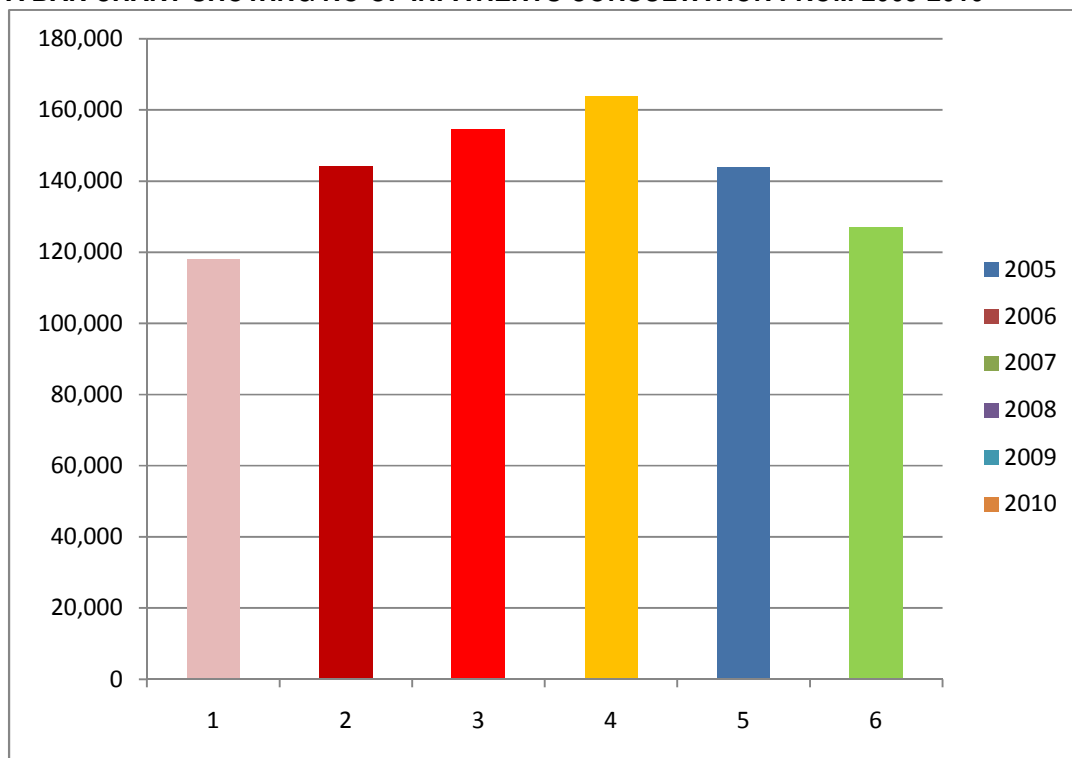
<b>YEAR</b>	<b>2005</b>	<b>2006</b>	<b>2007</b>	<b>2008</b>	<b>2009</b>	<b>2010</b>
<b>No. of In-patients Consultation</b>	<b>6,823</b>	<b>8,549</b>	<b>8,423</b>	<b>8,908</b>	<b>8,199</b>	<b>7780</b>

There has been a remarkable increase in-patient attendance from **6,823** in 2005 to **7780** in 2010. The highest in-patients attendance for the period occurred in 2008



with **8,908** admissions. The established criteria for accessibility is that in-patients consultations continue to grow over past levels. Access to the hospital services have increased in 2010 with **12.3%** over the 2005 levels.

**A BAR CHART SHOWING NO OF INPATIENTS CONSULTATION FROM 2005-2010**

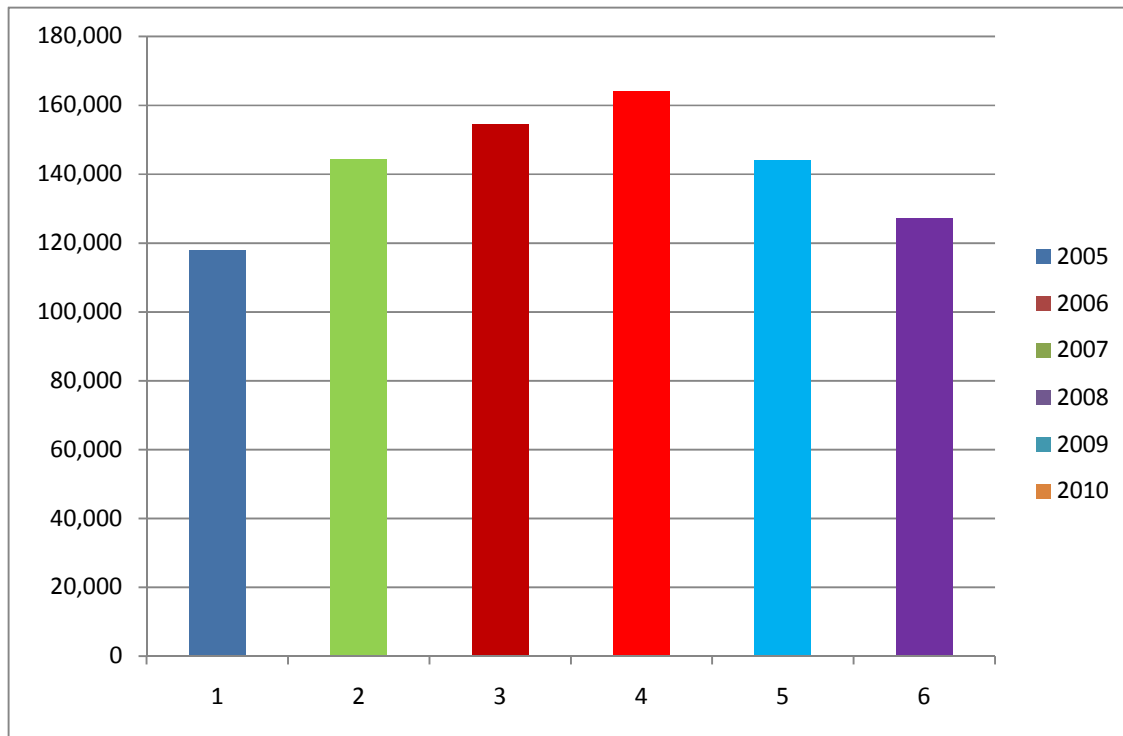


**2.1.2 ACCESSIBILITY INDICATOR: No. of Out-patient Consultations for the period.**

YEAR	2005	2006	2007	2008	2009	2010
<b>No. of Outpatients Consultations</b>	<b>117,921</b>	<b>144,226</b>	<b>154,482</b>	<b>163,983</b>	<b>144,016</b>	<b>127,192</b>

Outpatient attendance continued to grow over the period from **117,192** in 2005 to **127,192** in 2010 amounting **7.2%** growth for the period.

**A BAR CHART SHOWING NO OF OUTPATIENTS CONSULTATION FROM 2005-2010**



**2.1.3 ACCESSIBILITY INDICATOR:** Percentage (%) of new patients to total attendance for the period.

YEAR	2005	2006	2007	2008	2009	2010
% of new patients to total attendance	26.3%	22.2%	21.9%	23.6%	22.7%	21.4%

On the average growth of new patients attendance had been on the increase from 2005 to the year 2010 with a yearly average growth rate of 23%.

## **2.2.0 PERFORMANCE INDICATOR-EQUITY**

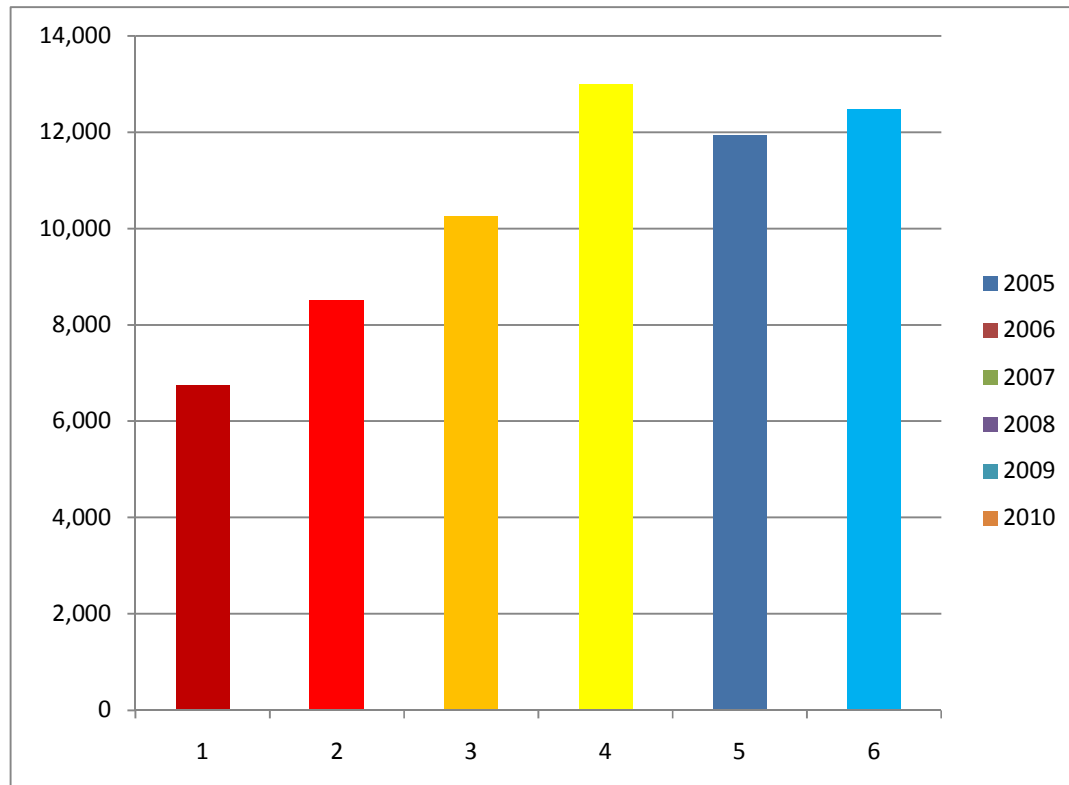
The equity indicator is concerned with fairness and it measures the difference in socio-economic, ethnic or gender groups' access and utilization of the health care services of the Hospital.

**2.2.1** The equity indicator is measured by: *No. of emergency cases treated within 48 hours.*

YEAR	2005	2006	2007	2008	2009	2010
No. of emergencies case treated within 48 hours.	6,758	8,519	10,255	12,990	11,932	12,469

The number of emergency cases treated within 48hrs without regards to ability to pay increased from **6, 758** cases 2005 to **12,469** in 2010 representing a **118.3%** for the period.

**A BAR CHART SHOWING NO OF EMERGENCY CASES TREATED WITHIN 48HOURS FROM 2005-2010**



### 2.2.2 Measure of Equity: Charges for first out-patient visits to the Hospital.

YEAR	2005	2006	2007	2008	2009	2010
Charges for first time Out-Patient visit	<del>₦500.00</del>	<del>₦500.00</del>	<del>₦500.00</del>	<del>₦500.00</del>	<del>₦500.00</del>	<del>₦500.00</del>

For the period under review, out-patients first time charges remained unchanged and affordable despite increasing inflation in the price of inputs into delivery of healthcare services.

### 2.2.3 Measure of Equity: Fees exemptions/waivers granted for the period.

YEAR	2005	2006	2007	2008	2009	2010
Amounts spent on waivers exemption	N10,258,675.00	₦17,388,029.00	₦11,338,225.00	₦20,227,651.00	₦19,446,236.00	₦14,850,418.00

For the period 2005-2010, National Hospital has spent cumulatively the sum of **₦93,509,264.00** as waivers/exemptions granted indigent patients to access treatment. The hospital has remained equitable in providing access to healthcare services without discrimination and in emergency cases without regards to ability to pay until patient condition stabilises.

### 2.3.0 PERFORMANCE INDICATOR: EFFECTIVENESS OF CARE

**Effectiveness describe the extent to which an intervention achieves its stated objective and is exemplified in curative, preventive or promotive health service by the degree to which the burden of mortality is reduced or controlled.**

**2.3.1 Measures of effectiveness of care are given by: In-patients mortality rate.**

YEAR	2005	2006	2007	2008	2009	2010
In-Patient Mortality Rate	41/1000	37/1000	34/1000	76/1000	62/1000	67/1000

In-Patient mortality rate has been low for the period under review from **41/1000** in 2005 to **34/1000** in 2007 and **67/1000** in 2010.

### 2.3.2 Measure of effectiveness: Maternal Mortality Rate:

YEAR	2005	2006	2007	2008	2009	2010
Maternal Death Rate	1/1000	1/1000	1/1000	2/1000	0/1000	0/1000

Maternal mortality rate remained low for the period.

#### **2.4.0 MEASURE OF PERFORMANCE: EFFICIENCY OF CARE**

Efficiency as a measure of healthcare performance define the extent to which the hospital makes optimal use of human, financial and material resources within the context of available technology in service delivery.

Measure of efficiency are given by:

##### **2.4.1 Measure of Efficiency: Average Length of stay:**

YEAR	2005	2006	2007	2008	2009	2010
Average Length of Stay (ALOS)	8.16 days	6.72 days	7.43 days	7.3 days	7.63 days	8.05 days

Average length of stay for in-patients has remained low for the period averaging 6.20 days for the period under study.

##### **2.4.2. Measure of Efficiency: Bed Utilisation Rate**

YEAR	2005	2006	2007	2008	2009	2010
Bed Occupancy Ratio	67.5%	67.2%	71.9%	80%	76.0%	69.0%

Bed occupancy ratio (Bed utilisation rate) continued to increase over the period from 67.5% in 2005 to 80% in 2008 and 69.0% in 2010.

Low average of stay for in-patients and increasing bed utilisation rate are clear indication of continuing efficient utilisation of resources.

### **SECTION III: GENERAL COMMENTS ON THE 2010 PERFORMANCE**

- 1. There was a general decline in the levels of activities in many areas of operations in 2010 when compared with same period last year. Total attendance for instance declined from 152,215 in 2009 to 135,391 in 2010 representing a 11.05% fall in hospital attendance for the period. The reason for this decline in patients attendance may be attributed to improved services at the various general hospitals within the environs and at the university of Abuja Teaching Hospital for the period. Fall in attendance could also be attributed to the health workers' strike in June/July, 2010 when the hospital was closed to patients attendance except only emergency cases.**
- 2. On clinic by clinic attendance, General Outpatients and STC remained the clinics of highest attendance with 21,830 and 14,102 for the period. This trend is consistent with previous years levels.**
- 3. In terms of performance, the hospital when evaluated in terms of accessibility, effectiveness of care, and efficiency in the utilisation of available resource performed creditably well as the access to care continued to remain high even though there was slight decline in 2009 and 2010.**

- 4. With the re-organisation in the A/E department, waiting time has reduced and patient care has improved in this critical section of the hospital.**
- 5. As regards effectiveness of care, both in-patient mortality rate and maternal mortality rate remained low for the year 2010 and infact the maternal mortality rate was 0/1000 for the year.**
- 6. For efficiency, the hospital recorded a high bed utilisation rate and the average length of stay remained low. This is an indication of continued efficient utilisation of resources.**
- 7. Amount spent on waivers/exemption granted to poor/indigent patient continued to remain high increasing from ₦10,258,675.00 in 2005 to ₦14,850,418.00 in 2010 representing 45% increase over the 2005 levels. Total waivers/exemptions granted from inception till date amounted to ₦93,509,264.00. Certainly this level of waivers/exemptions is a source of worry to management and is unsustainable.**

## **RECOMMENDATION**

1. Patients attendance continued to remain high and the pressure is exerted on the physical facilities/personnel of the hospital. Management need to keep the tempo of the expansion of the physical infrastructure/facilities currently going on in the hospital.
  
2. With continued growth of patient attendance at the STC clinic, Management needs to expand the clinic's infrastructure to accommodate this growth.
  
3. Lastly, as we have stated in last previous reports, the present waivers/exemptions granted indigent/poor patients regime is unsustainable. Management needs to explore ways to include waivers as an overhead expense in future budget proposal to the Federal Government.

**C.I. OGBEIDE**  
**Deputy Director**  
**Planning, Research & Development Division**



## **APPENDICES**

- 1) Out-patients attendance on month by month basis for year 2010 with the specialties.
- 2) Ward admission on month by month basis for year 2010.
- 3) Ward deaths on month by month basis for 2010.
- 4) Surgical Operations performed by specialties on month basis for year 2010.
- 5) Deliveries by type on month by month basis for year 2010.
- 6) Radiological Examinations on month by month basis for 2010.
- 7) Yearly out-patients attendance (1999-2010).
- 8) Yearly in-patients attendance (1999-2010).